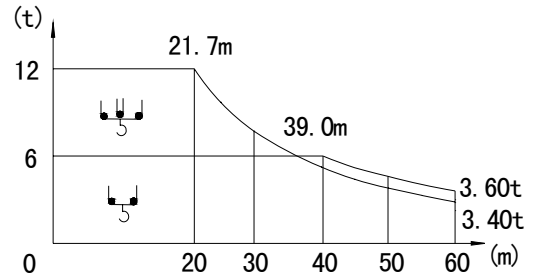
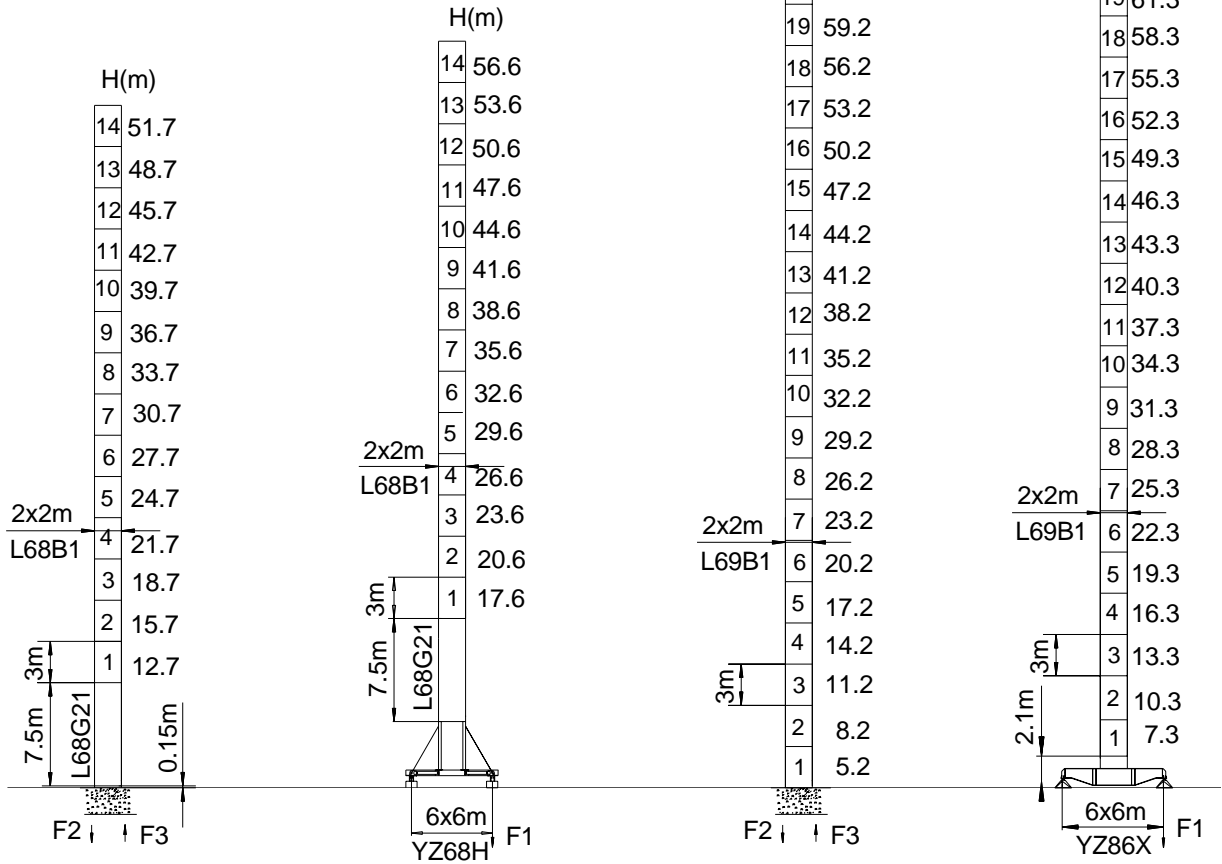


載荷表 Load Chart

R (m)	倍率 Fall	R _{max} (m)	C _{max} (t)	25	30	40	45	50	55	60
60	☺	21.7	12.0	10.20	8.20	5.80	5.00	4.35	3.75	3.40
	☹	39.0	6.0	6.00	6.00	6.00	5.20	4.50	3.95	3.60
55	☺	23.2	12.0	11.00	9.30	6.30	5.40	4.80	4.20	
	☹	41.7	6.0	6.00	6.00	6.00	6.00	5.00	4.40	
50	☺	24.1	12.0	11.00	9.30	6.60	5.80	5.00		
	☹	47.0	6.0	6.00	6.00	6.00	6.00	5.20		
45	☺	24.4	12.0	11.00	9.10	6.90	5.80			
	☹	45.0	6.0	6.00	6.00	6.00	6.00			
40	☺	24.6	12.0	11.80	9.60	6.80				
	☹	40.0	6.0	6.00	6.00	6.00				



- 工作狀態支反力
Reaction in service
- 非工作狀態支反力
Reaction out of service
- ⊗ 整機自由高度重量 (不含平衡重及壓重重量)
Total weight for free standing crane
without counterweight & ballast.

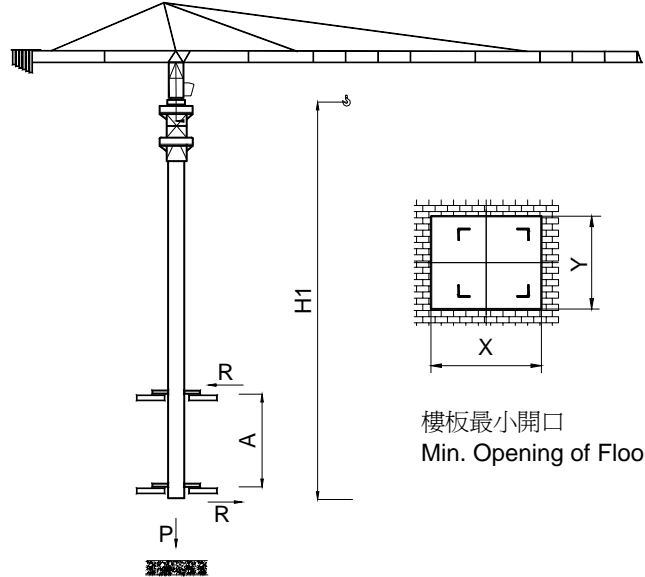
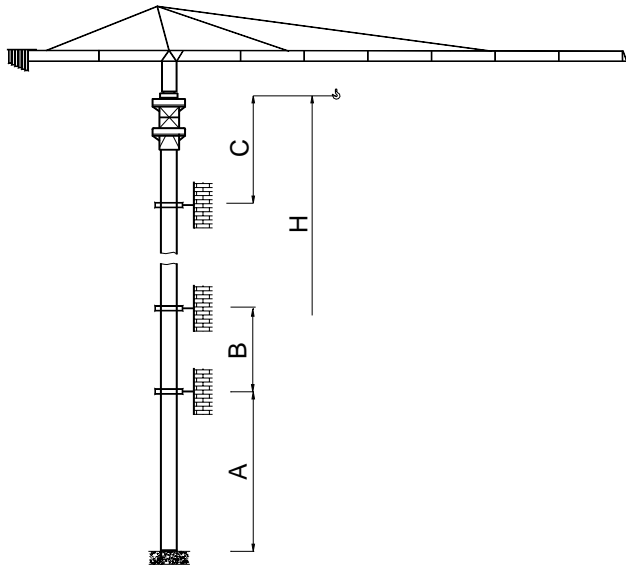


	●	■
F2	135t	140t
F3	88t	94t
⊗	79t	

	●	■
F1	85t	95t
⊗	94t	

	●	■
F2	162t	144t
F3	115t	136t
⊗	81t	

	●	■
F1	106t	110t
⊗	104t	



樓板最小開口
Min. Opening of Floor

塔身節 Mast	A (m)	B (m)	C (m)	H (m)
L68B1	39.0	27.0	39.7	186.7
L69B1	49.5	36.0	47.7	※

塔身節 Mast	臂長 Jib length	H1 (m)	A (m)	P (t)	R (t)	X (m)	Y (m)
L68B1	60m	45.6	12~19	82	31.5	2.58	2.17
L69B1	60m	49.1	11.0	89	31.5	2.58	2.17

主要性能參數 Main Specifications

機構 Mechanism						電動機 Motor kW
	m/min	t	m/min	t		
	70RCS30	0-40 0-80	6.0 3.0	0-20 0-40	12.0 6.0	550m >550m* 51.5 (70hp)
	55LFV30	0-44 0-53 0-88	6.0 4.0 1.7	0-22 0-27 0-44	12.0 8.0 3.5	630m >630m* 55
	55LFV30B	0-44 0-53 0-88	6.0 4.0 1.7	0-22 0-27 0-44	12.0 8.0 3.5	630m >630m* 55
	75LFV30	0-60 0-80 0-120	6.0 3.0 1.5	0-30 0-40 0-60	12.0 6.0 3.0	1030m >1030m* 75
	DTC120	0→57 m/min				120 N.m
	RTC290	0—0.8 rpm				2x145 N.m
	YMD100	0—0.8 rpm				10.5
	RT	12.5—25 m/min				4x2.6/5.2

	kVA
380V (±5%) 50 Hz / 60 Hz	70RCS30, 55LFV30, 55LFV30B: 105 75LFV30: 140

* ※ 與製造商聯繫 Contact with us, please.

Copy Right ©YONGMAO 2008

地址：中國遼寧省撫順市順城區環大路3號 郵編：113126
 Add: No.3 Yuanda Road, Shuncheng District, Fushun, Liaoning, P.R.China
 Tel: 86-413-7648899 Fax: 86-413-7649999
 E-mail: sun@yongmao.com.cn

ISO9001:2000



認可註冊號: CNAB035-Q



YONGMAO HOLDINGS LIMITED

