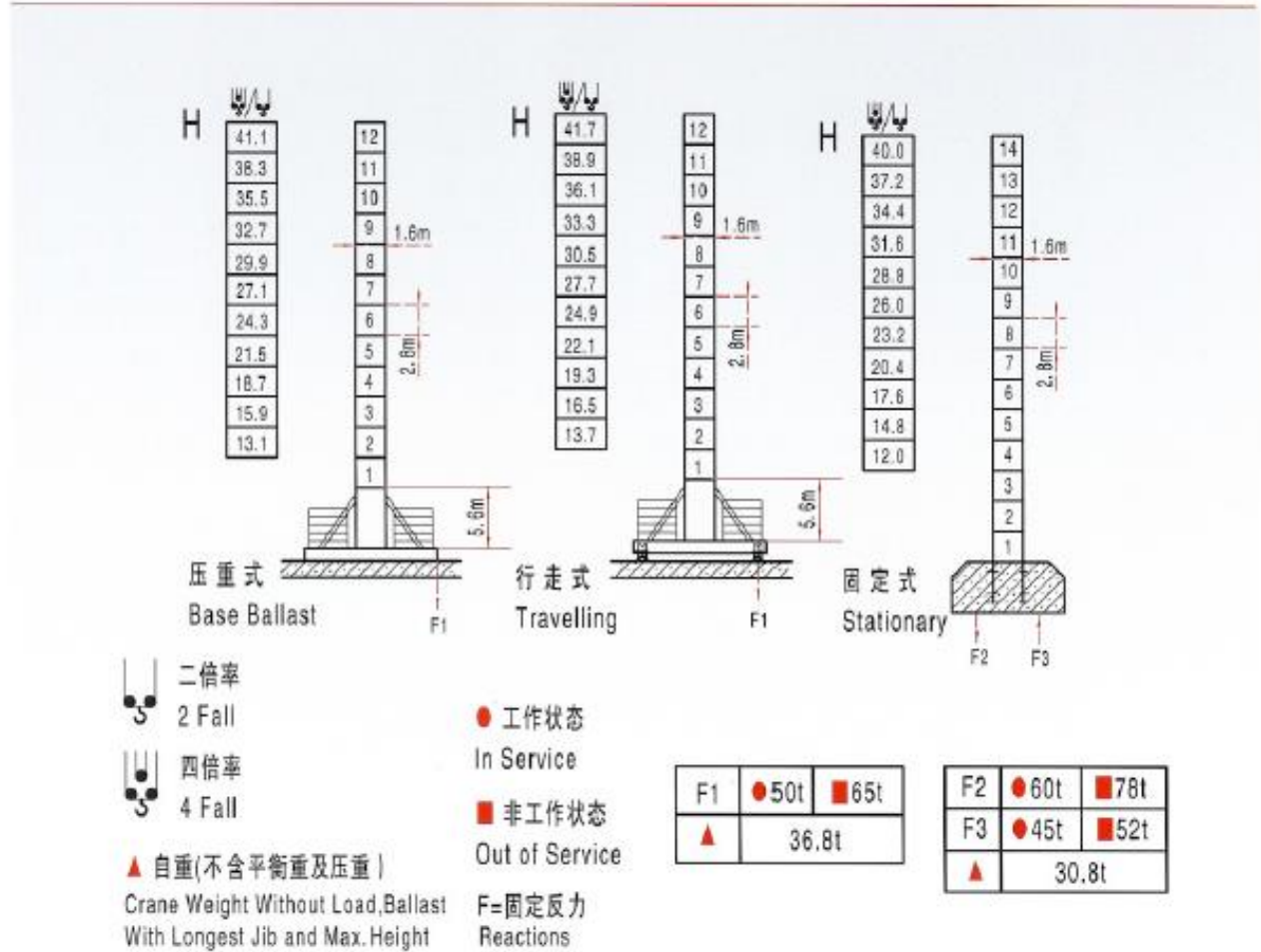
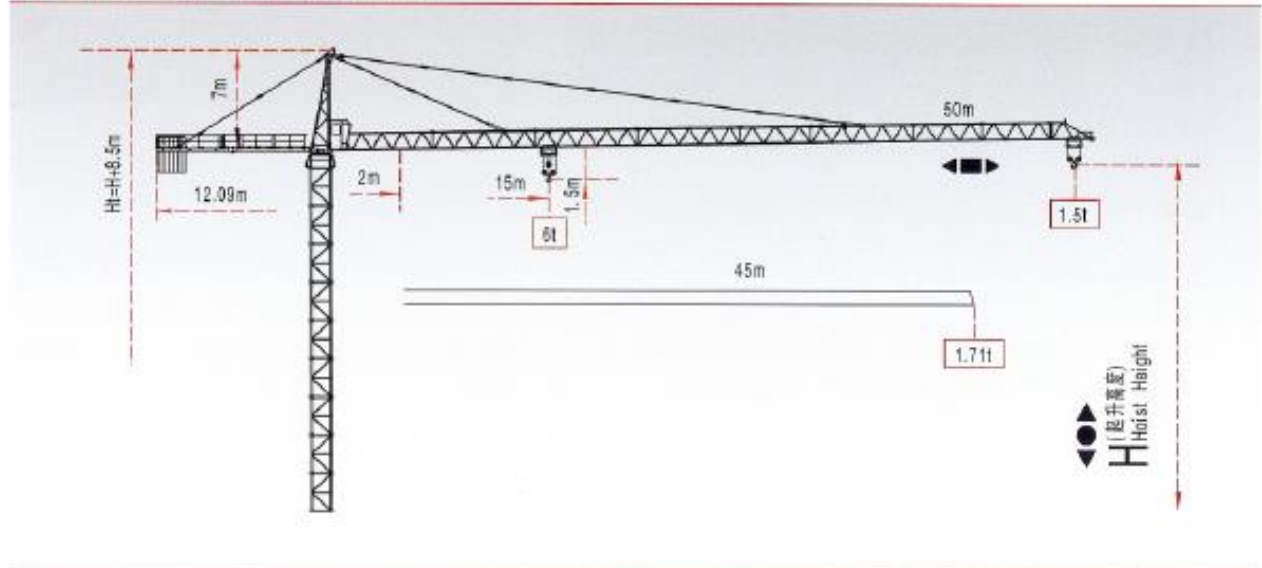


# HUBA 虎霸 H5015 塔式起重机

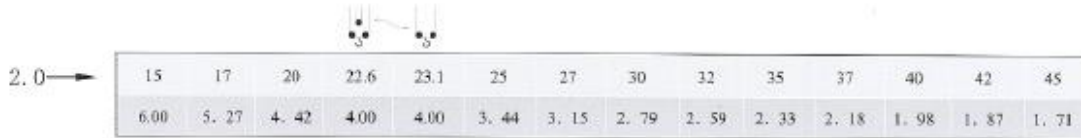
Tower Crane

外型尺寸 Outline Dimension



# H5015 塔式起重机

## 负荷特性表 Load Diagrams

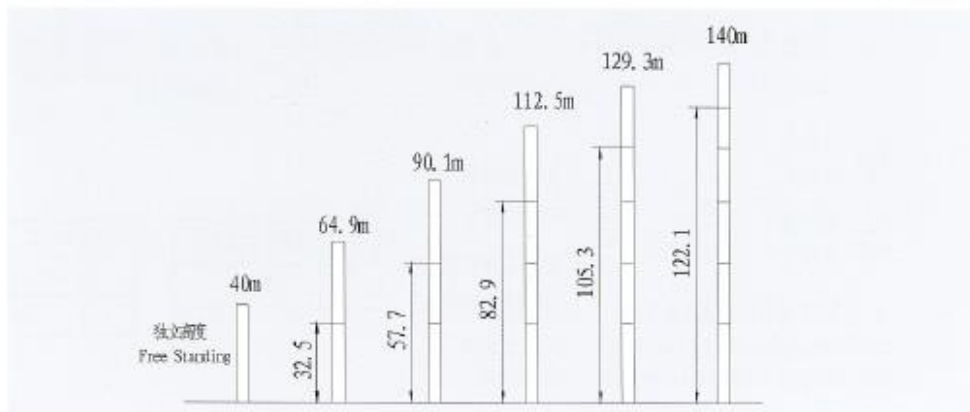


注：当四倍率应用于表中二倍率载荷时应从相应载荷中减去 100kg。  
**When using 4 fall, subtract 100kg from the load 2 fall.**

名称 Items	机构代号 Mechanism	工作速度 Speed		起重量 Hoist Weight (t)	电机功率 Motor (kW)
		倍率 Fall	m/min		
起升 Hoisting	24PQC15	双绳 2 Fall	0~40	3	24
		四绳 4 Fall	0~20	6	
		双绳 2 Fall	0~80	1.5	
		四绳 4 Fall	0~40	3	
	24YQY15	双绳 2 Fall	0~40	3	24
		四绳 4 Fall	0~20	6	
变幅 Trolleying	BXD3	0~20/40 m/min			3.3
	BTW75	0~58 m/min			75N·m
回转 Slewing	HYX2	0~0.6 rpm			2×2.2
	RCV95	0~0.65 rpm			95 N·m

该塔机可选配载荷力矩显示器，详情请参阅样张。The Load Moment Indicator is optional for this Crane, for more details, please reference the Catalogues.

## 附着及附着点高度 Anchorage and height



我公司产品在不断发展提高，如该样本参数与实物不符请以实际产品为准。  
 As the product of our company is developing constantly, please accord to the actual product. If parameters don't match it.